

DUSK TO DUSK

Unsettled, Unraveled, Unreal

Toured by Curatorial Assistance Traveling

DUSK TO DUSK

Unsettled, Unraveled, Unreal

**CURATORIAL
ASSISTANCE**

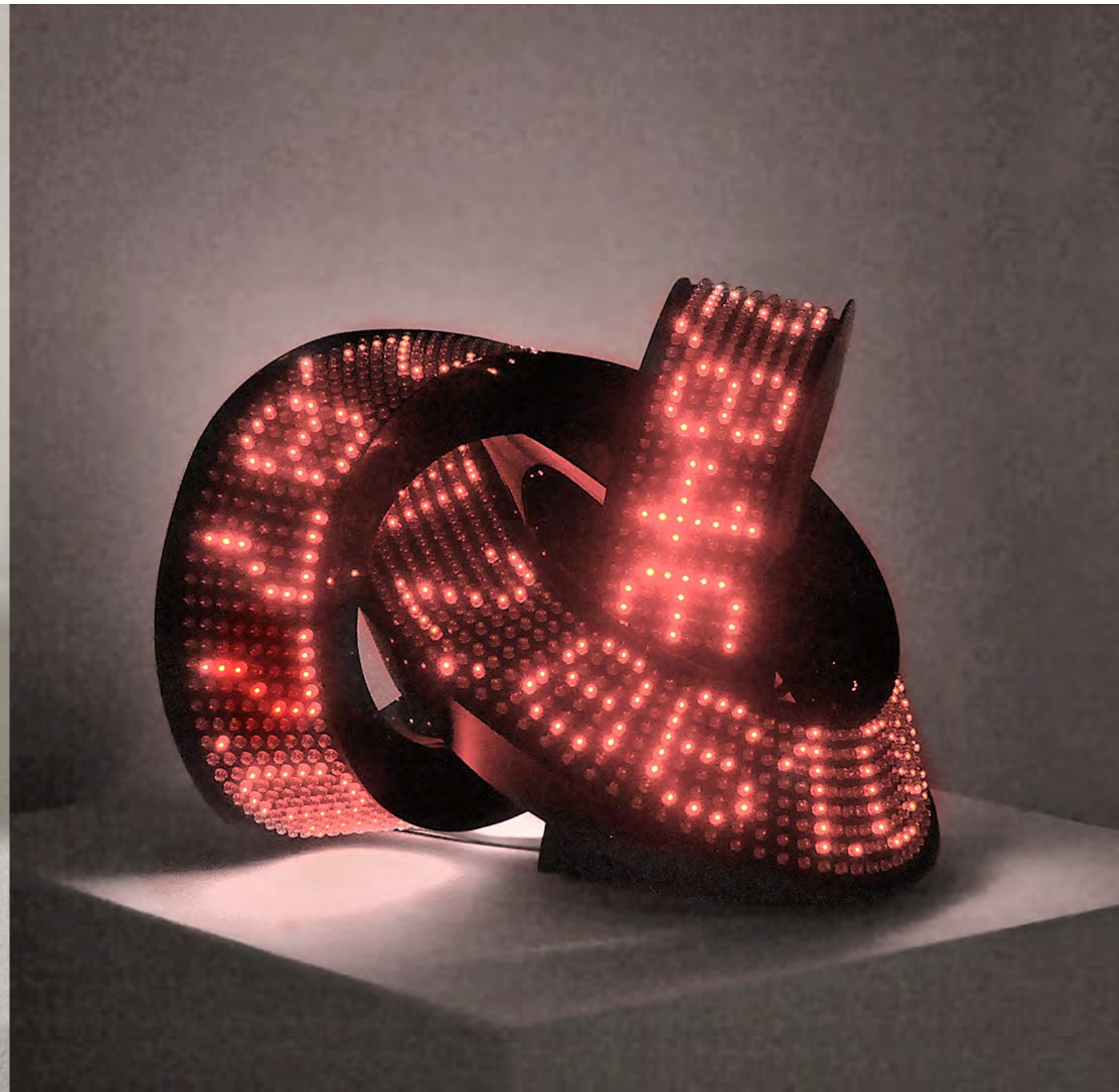
Dusk to Dusk: Unsettled, Unraveled, Unreal turns a mirror to the world, examining individual isolation, political repression, and collective ennui in the decline of the industrial age, an age in which people are simultaneously singular and collective beings. Some seek a return to the land, others seek spiritual transcendence, and others share an affection for our new hybrid of increasingly alienated selves. Through painting, photography, sculpture, and video this exhibition explores a contemporary familiarity with collective darkness.

Curated by Richard Rinehart, the Director of Samek Art Gallery at Bucknell University, these twenty-eight artists provide a glimpse into what it might mean to be an individual during the transition from the twentieth to the twenty-first century, allowing viewers to reflect on past mistakes while reveling in progressive poetics.





Louise Bourgeois
Le Trani Episode
Bronze, silver nitrate and gold patina
7 1/2" x 10 1/2" x 10 1/2"
1971



Aristarkh Chernyshev
Knode
Internet-connected sculpture (plastic, LED)
40" x 40"
2009



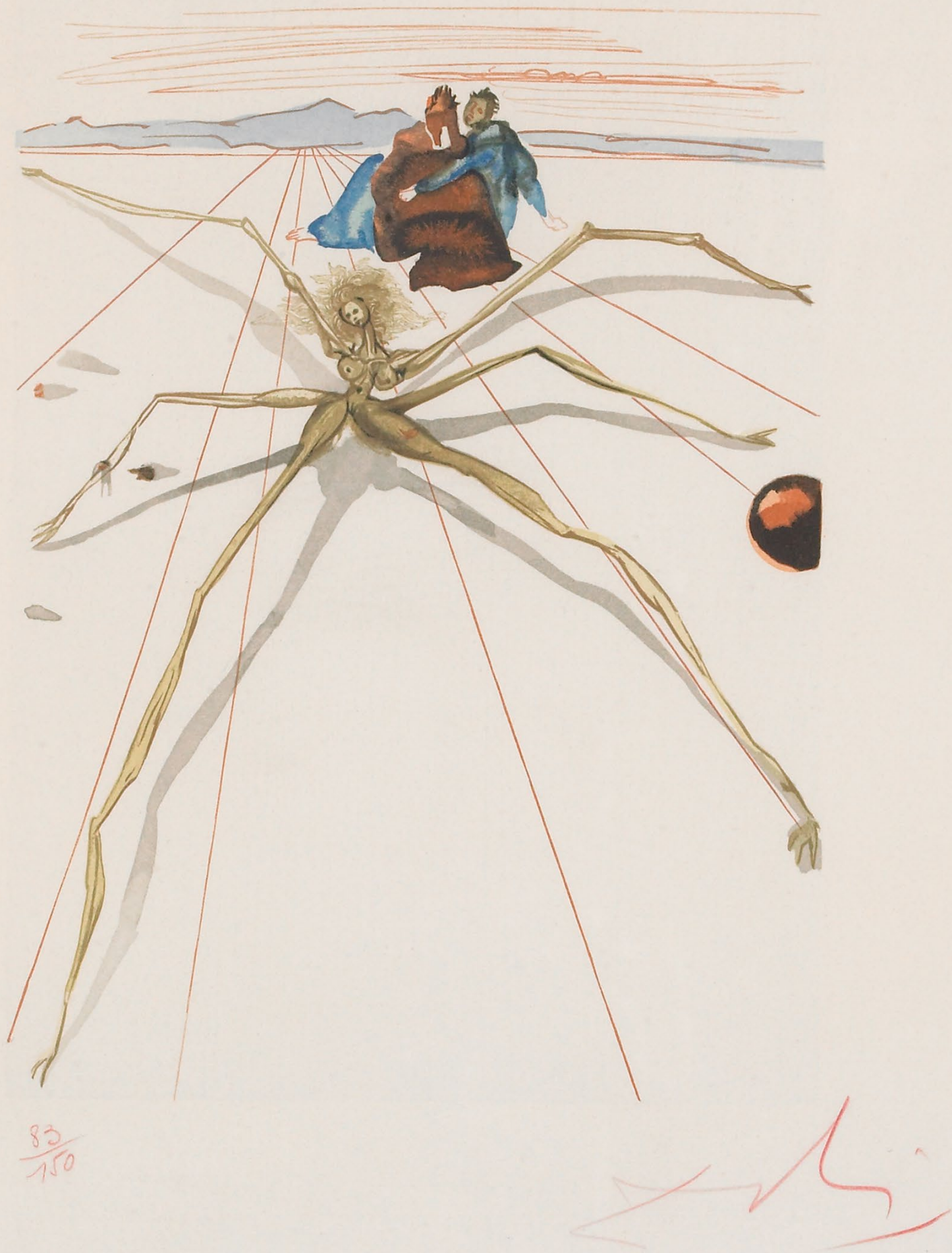
Richard Long, *Untitled*, 2008, river Avon mud and China clay with acrylic medium and paint on wood, 49 3/16" x 39 3/8"



Erwin Wurm, *Hoody*, 2010, acrylic paint, 18 7/8" x 9 13/16" x 5 1/2"



Erwin Olaf, *Dawn-The Mother*, 2009, lambda print on Kodak Endura, 29 1/8" x 55 1/2" (detail)



Salvador Dalí, *Spiderwoman*, 1951, lithograph, 9 13/16" x 7 1/16"



Tony Cragg, *Untitled*, 2004, bronze, 29 1/2" x 13 3/4" x 15 3/4"



Tianbing Li
Ruine
Oil on canvas
51 3/16" x 51 3/16"
(no date)



Jie Luo
Imprisoned-Falling
Acrylic on canvas
70 7/8" x 82 11/16"
2001

DUSK TO DUSK

Unsettled, Unraveled, Unreal

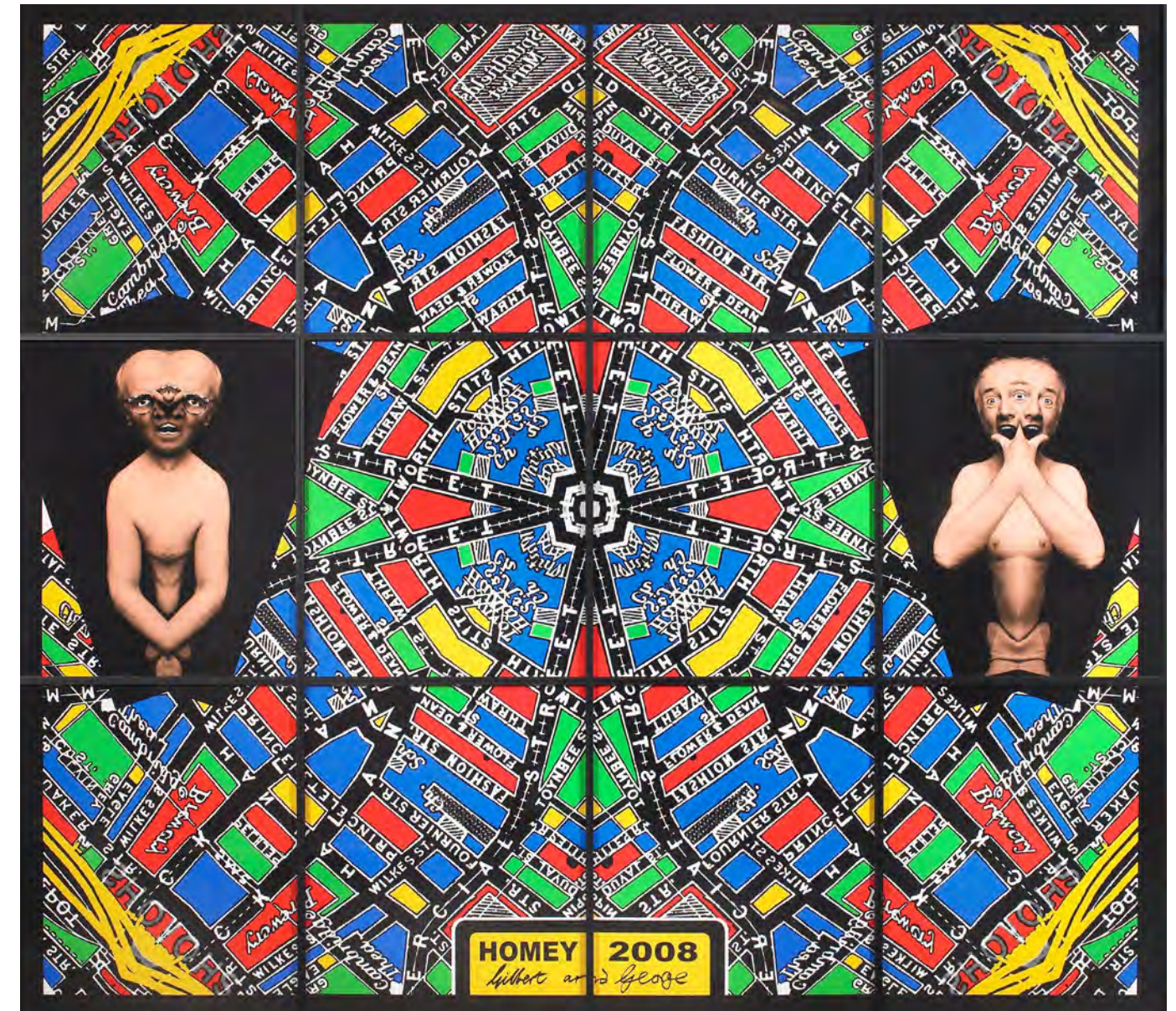
**CURATORIAL
ASSISTANCE**

FEE: \$20,000.00, per 6 – 8 week period plus prorated shipping

NUMBER OF OBJECTS: 18 wall-hanging works, 11 sculptures, 8 videos

SPACE REQUIREMENTS: 250 linear ft (76.2 linear m)

Aldridge, James, *The Gathering*, 2010. Acrylic on canvas, 68 7/8" x 59 1/16"
Bhabha, Huma, *Untitled*, 2008. Sculpture, 29 1/8" x 8 11/16" x 9 7/16"
Bourgeois, Louise, *Le Trani Episode*, 1971. Bronze, silver nitrate and gold patina, 7 1/2" x 10 1/2" x 10 1/2"
Burtynsky, Edward, *Shipbreaking #1, Chittagong, Bangladesh*, 2004. Chromogenic color print, 17 1/2" x 21 3/4"
Calderwood, Matt, *Cuff*, 2006. Digital Video, 1:37
Calderwood, Matt, *Dam 1*, 2008. Mixed media sculpture, 37 13/16" x 39 3/8" x 11 13/16"
Calderwood, Matt, *Gloss*, 2004. Digital Video, 1:16
Calderwood, Matt, *Lightbulb (screw)*, 2006. Digital Video, 1:45
Calderwood, Matt, *Matches*, 2006. Digital Video, 2:24
Calderwood, Matt, *Polystyrene (front)*, 2006. Digital Video, 1:58
Calderwood, Matt, *Strips (vertical)*, 2005. Digital Video, 2:50
Chernyshev, Aristarkh, *Knodel*, 2009. Internet-connected sculpture (plastic, LED), 40" x 40"
Cragg, Tony, *Untitled*, 2004. Bronze, 29 1/2" x 13 3/4" x 15 3/4"
Dalí, Salvador, *Spiderwoman*, c. 1951. Lithograph, 9 13/16" x 7 1/16"
Day Jackson, Matthew, *High, Low, and In Between*, 2007. Mixed media sculpture, 98 13/16" x 44 7/8" x 29 1/8"
Dolron, Desiree, *Cerca Villegas*, 2002-3. Dye destruction, color coupler print, diasecmented, 49 3/16" x 49 3/16"
Dzama, Marcel, *Welcome to the Land of the Bat*, 2008. Wood, ceramic sculptures, metal, fabric, 33" x 28" x 40"
Ford, Laura, *Espaliered Girl*, 2007. Jesmonite, 59 1/16" x 70 7/8" x 11"
Gilbert & George, *Homey*, 2008. Mixed media, 89" x 100"
Kawashima, Hideaki, *I30*, 2004. Acrylic on canvas, 17" x 16 1/2"
Li, Tianbing, *Media Infant*, 2006. Oil on canvas, 78 3/4" x 78 3/4"
Li, Tianbing, *Ruine*. Oil on canvas, 51 3/16" x 51 3/16"
Long, Richard, *Untitled*, 2008. River Avon mud and China Clay with acrylic medium on wood, 49 3/16" x 39 3/8"
Luo, Jie, *Imprisoned-Falling*, 2001. Acrylic on canvas, 70 7/8" x 82 11/16"
Meese, Jonathan, *CHIPS-TEUFEL...*, 2007. Bronze, 45 11/16" x 22 13/16" x 28 3/4"
Menlibayeva, Almagul, *Kissing Totems*, 2008. Lambda print mounted on Alu-Diabond, 28" x 42"
Olaf, Erwin, *Dawn-The Mother*, 2009. Lambda print on Kodak Endura, 29 1/8" x 55 1/2"
Olaf, Erwin, *Dusk and Dawn*, 2009. Digital Video, 5:11
Olaf, Erwin, *Dusk-The Mother*, 2009. Lambda print on Kodak Endura, 29 1/8" x 55 1/2"
Op de Beeck, Hans, *Staging Silence*, 2009. Digital Video, 22:01
Shaobin, Yang, *Untitled*, 2001. Oil on canvas, 35 7/16" x 31 1/2"
Steketee, Anouk, *Carin*, 2009. Kodak Endura print, 27 9/16" x 27 9/16"
Sugimoto, Hiroshi, *Fifth Avenue Theatre, Seattle*, 1997. Gelatin silver print, 20" x 24"
van Empel, Ruud, *Generation*, 2010. Chromogenic print, Dibond, plexiglass, 49 3/16" x 129 15/16"
van Veluw, Levi, *Landscape III*, 2008. Lambdaprint on Dibond, anti-reflex Perspex, 47" x 40"
Wenzel, Anne, *Silent Landscape (collapsing building)*, 2006. Ceramics, glaze, 16 1/8" x 31 7/8"
Wurm, Erwin, *Hoody*, 2010. Acrylic paint, 18 7/8" x 9 13/16" x 5 1/2"



Gilbert & George, *Homey*, 2008. Mixed media, 89" x 100"

Curatorial Assistance Traveling Exhibitions (CATE) is a nonprofit organization dedicated to creating opportunities for access, outreach, and education in the visual arts through the origination and circulation of diverse and innovative exhibitions for museums and art organizations worldwide.

